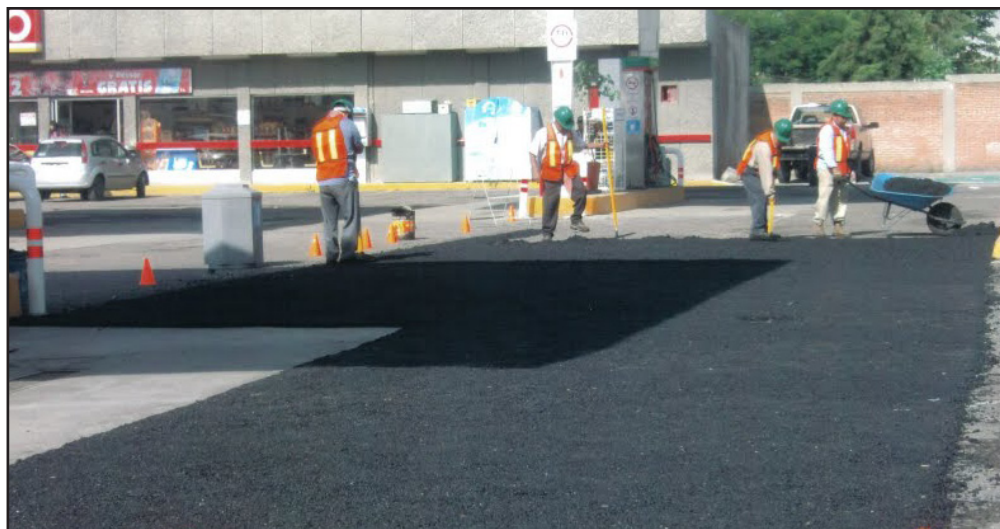


# Pemex Gas Station

Puebla, Mexico — EZ STREET® Cold Asphalt Surface Area Repair

At a Pemex gas station in Puebla, Mexico, a large area of the lot needed to be completely resurfaced. The gas station, off of the federal highway Atlixco km 7, required the complete repair of 1200 square meters. The resurfacing was applied to areas of continuous rolling, due to concrete being applied in the cargo area. The topography of the area being repaired at the Pemex station required a variable thickness of the EZ STREET cold mix asphalt to produce an even surface; the majority of the resurfacing job required a thickness of two to three centimeters, though in some areas the EZ STREET was applied to be as little as one centimeter thick. Once the EZ STREET cold mix asphalt was applied to the area, the surface was irrigated at the edges to about fifteen centimeters in. Overall, repairing the entire surface area required minimum labor, tools, and material, thanks to the use of EZ STREET cold mix asphalt.



For more information about this project or to learn more about EZ STREET cold asphalt, please call us at 1-800-734-1476.